



Item	Value	Remark
Nominal voltage	220–240V	
Nominal frequency	50–60Hz	
AC voltage range	198–264V	
DC voltage range (start)	NA	
DC voltage range (operation)	NA	
Nominal current	100mA	Full load @230VAC
Total Harmonic Distortion (THD)	< 20%	Full load @230VAC
Power factor		
LRV15W48P	0.45–0.93C	Min-load @ 240Vac and Full-load @ 220 Vac
LRV15W24P	0.45–0.93C	Min-load @ 240Vac and Full-load @ 220 Vac
LRV15W12P	0.35–0.93C	Min-load @ 240Vac and Full-load @ 220 Vac
Displacement factor		
LRV15W48P	0.45–0.93C	Min-load @ 240Vac and Full-load @ 220 Vac
LRV15W24P	0.45–0.93C	Min-load @ 240Vac and Full-load @ 220 Vac
LRV15W12P	0.35–0.93C	Min-load @ 240Vac and Full-load @ 220 Vac
Efficiency		
LRV15W48P	88% (Typ.)	Full load @230VAC
LRV15W24P	88% (Typ.)	Full load @230VAC
LRV15W12P	86% (Typ.)	Full load @230VAC
No-load power	NA	
Stand-by power	NA	
Protection class	NA	
Inrush current	17 A / 40 us	
Max.units per circuit breaker	Type B , 10A MCB , 40 PCS	
	Type B , 16A MCB , 64 PCS	
	Type C , 10A MCB , 50 PCS	
	Type C , 16A MCB , 80 PCS	
Touch current	< 0.7mA peak	IEC/EN 61347-1
Nominal voltage range		
LRV15W48P	48Vdc	
LRV15W24P	24Vdc	
LRV15W12P	12Vdc	
Maximum voltage		
LRV15W48P	53Vdc	
LRV15W24P	26Vdc	
LRV15W12P	13Vdc	

	Item	Value	Remark
Output	Voltage accuracy	± 5%	Full load @230VAC
	Output LF voltage ripple		< 120Hz
	LRV15W48P	± 5%	
	LRV15W24P	± 6%	
	LRV15W12P	± 8%	
	SVM	≤ 0.4	Full load @230VAC
	PstLM	≤ 1	Full load @230VAC
	Starting time	< 0.5 S	Full load @230VAC
	Nominal power range		
	LRV15W48P	2.4-15W	
	LRV15W24P	1.2-15W	
	LRV15W12P	0.6-15W	
	Nominal current range		
	LRV15W48P	50-312.5mA	
LRV15W24P	50-625mA		
LRV15W12P	50-1250mA		
Dimming	Dimming control	NA	
	Dimming technique	NA	
	PWM frequency	NA	
	Dimming range	NA	
	Lowest dimming current	NA	
	Galvanic isolation	NA	
Environment	Ambient temperature range $t_a$	-20°C - +50°C	
	Maximum case temperature $t_c$	75°C	
	Max. case temp. in fault condition	110°C	When operating under fault conditions, the temperature of the enclosure at any location should not exceed 110 °C
	Storage temperature range	-40°C - +85°C	
	Relative humidity	10% - 95%	
	Surge transient protection	1 kV , 2 kV	L-N , L/N-PE
	Environmental rating	Indoor	
	IP rating	IP20	
	Mains switching cycles	> 100,000	
	Expected lifetime		
	LRV15W12P		
	Full Load	> 50,000 h, $t_c$ 75 °C @ $t_a$ 50 °C	0.2 % / 1,000 h failure rate
	Output load ≤ 8.3W	> 50,000 h, $t_c$ 75 °C @ $t_a$ 60 °C	0.2 % / 1,000 h failure rate
	LRV15W24P		
	Full Load	> 50,000 h, $t_c$ 75 °C @ $t_a$ 50 °C	0.2 % / 1,000 h failure rate
	Output load ≤ 7W	> 50,000 h, $t_c$ 75 °C @ $t_a$ 60 °C	0.2 % / 1,000 h failure rate
	LRV15W48P		
Full Load	> 50,000 h, $t_c$ 75 °C @ $t_a$ 50 °C	0.2 % / 1,000 h failure rate	
Output load ≤ 9W	> 50,000 h, $t_c$ 75 °C @ $t_a$ 60 °C	0.2 % / 1,000 h failure rate	
Packing	Gross weight/box	12.2 kg	
	Net weight/box	11.0 kg	
	Pcs/box	132 PCS	
	Dimension/box	490 (L)*270 (W)*225 (H)mm	
<b>Protections</b>			
Short-circuit Protection		Auto recovery	
Open-circuit Protection		Auto recovery	
Overload Protection		Auto recovery	
<b>Conformity &amp; Standards</b>			
Safety standard:	EN 61347-1, EN 61347-2-13, EN 62493		
Performance:	EN 62384		
EMC standard:	EN 55015, EN 61000-3-2, EN 61000-3-3, EN 61547		

### Cable information

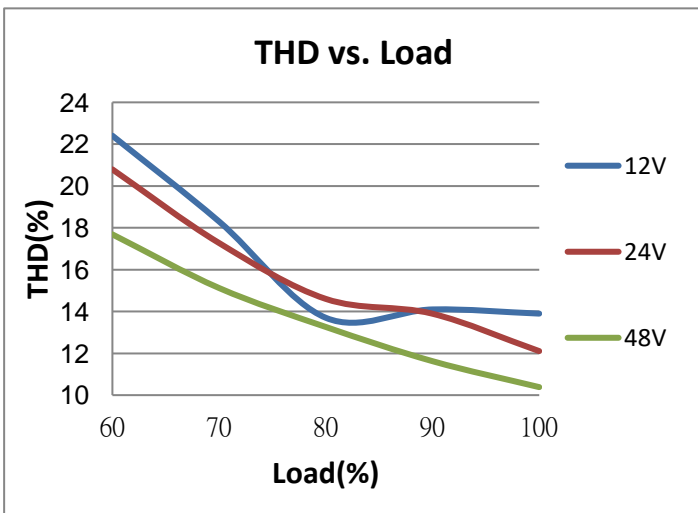
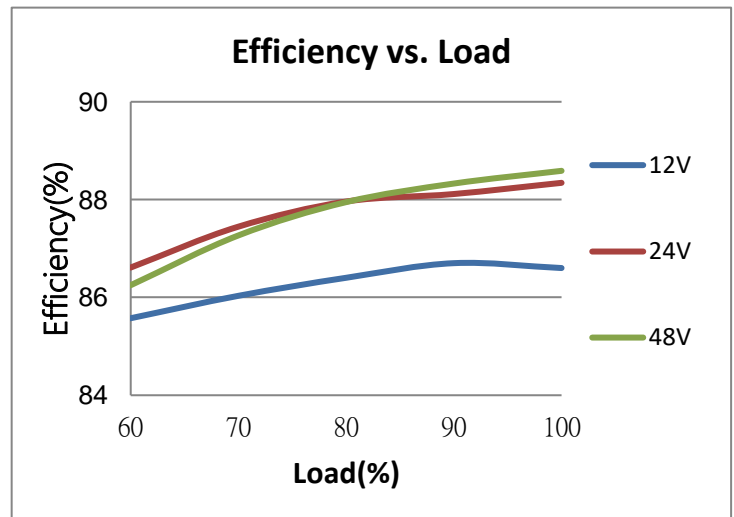
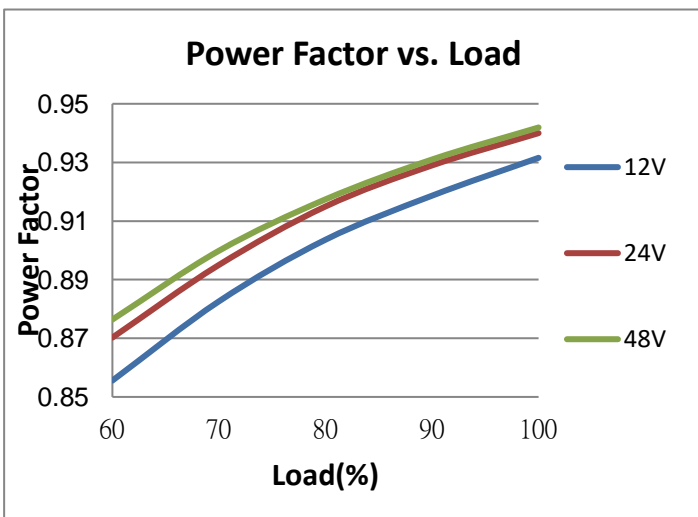
PRI Connection	L	N
Color	Brown	Blue
Wire type	7022	7022
Wire diameter	AWG20	AWG20
Wire length	142mm	142mm
Stripping	6mm	6mm
Tolerance	±5mm	±5mm

Sec Connection	+	-
Color	Red	Black
Wire type	1332	1332
Wire diameter	AWG22	AWG22
Wire length	142mm	142mm
Strip length	6mm	6mm
Tolerance	±5mm	±5mm

\*Subject to change without notice, HEP guarantees all products perform functionally well\*

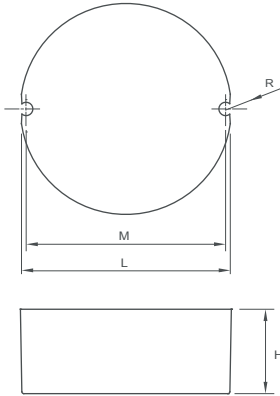
\*If not mentioned, all the test conditions are based on full load at 230VAC input (for 220-240 VAC input).

### Electrical Values @230vAC



## Physical

### Parameter



L : 55 mm    H : 22 mm  
M : 52 mm    R : 1.75 mm

Tolerance : +/-1 mm , R : +/-0.5 mm

Slot On One Side Allowing Alignment : M+/-3 mm

Housing Material : Polycarbonate

Soldering : Lead-Free, Comply With RoHS

Label : Surface Print

## Wiring Diagram

